

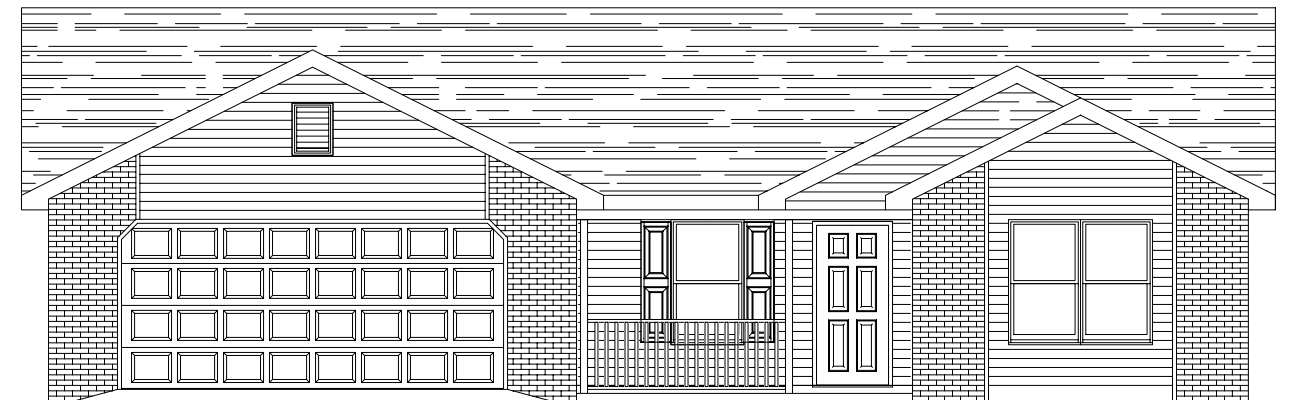


# CHARLESTON I

(PARTIAL BRICK ELEVATIONS)



ELEVATION "B"



\*ELEVATION SHOWN w/ DOUBLE GABLE OPTION\*

ELEVATION "C"

PO Box 549, Decatur, IN 46733 260-724-9131

*"Building Trust and Quality in Every Home"*

© ALL RIGHTS RESERVED